

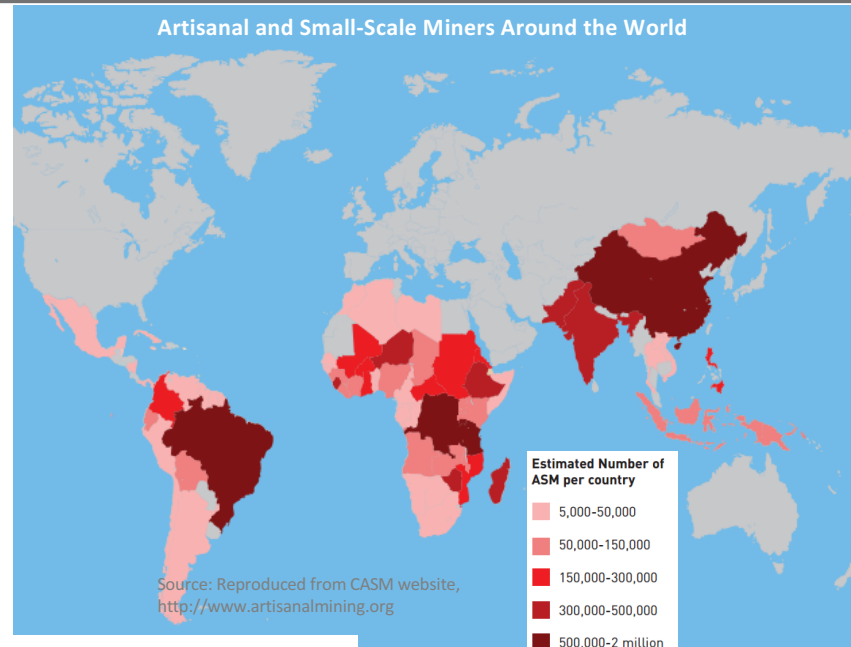


***Connecting local ASM activities with multi-level regulatory frameworks***



# Artisanal and small-scale mining (ASM) in the world

- ASM is a major source of mineral resources production in the world
- 20+ million artisanal miners globally
- 100+ million people depending for their livelihood - 30%+ are women
- ASM is largely informal, and is associated with low levels of safety measures, health care or environmental protections
- ASM can however be a **huge driver of inclusive growth in developing countries**



Artisanal and small scale mining proportion of world production of various metals in 2011

Metal	ASM share (%)	ASM production (tonnes)	Total world production (tonnes)
Tantalum	26	205	790
Tin	25	88,500	354,000
Gold	25	681	2,724
Tungsten	>6	>4,320	72,000
Iron ore	<4	<79,720,000	1,993,000,000
Lead	3	140,100	4,670,000
Zinc	1	129,640	12,964,000
Copper	0.5	80,175	16,035,000

Artisanal gold represents over 25% of yearly production – roughly around 700 tonnes in 2014

Source: Polinares, Raw Materials Data





## OECD Guidance and artisanal and small-scale mining (ASM)

- ✓ ASM has a **key role, can drive sector-wide changes** in responsible sourcing
- ✓ The Guidance enables **market access** through **collaborative efforts** of all actors involved
- ✓ **Detailed Appendix on ASGM** provides roadmap to create economic and development opportunities for artisanal miners
- ✓ **All stakeholders** (e.g. governments, industry, civil society) encouraged to use the suggested measures in the Appendix



*OECD Secretariat released in May 2016 an [“ASM FAQ”](#) to clarify expectations of the Guidance with regard to responsible ASM engagement by int’l private sector*



## OECD DDG Appendix: roadmap for a responsible ASGM sector (p.114 of the document)

---

- ✓ **Formalisation and legalisation:**
  - Provide technical assistance, e.g. equipment, geological data and information
  - Assist ASM to obtain mining rights and licenses
  - Facilitate dialogue where illegal mining exists, encourage good faith engagement, consider revenue-sharing agreements, or mediated disputes as a last resort
- ✓ **Provide financial support**, including capital, revenue-sharing agreements
- ✓ **Promote competitive marketing of ASM Gold**
- ✓ **Foster international cooperation on ASM issues**, including through donor programmes, among mining and custom authorities to enable better understanding and access for ASM gold





## OECD Implementation Programme - Focus on ASM activities

---

- ✓ **World Bank – OECD ASM Centre of Excellence** - Connecting donors with ASM projects, incorporating OECD standards in World Bank projects, creation of one-stop shop for ASM data
- ✓ **Support to on-the-ground responsible supply chain programs** – e.g. CRAFT Code Committee, international Tin Supply Chain initiative; “Just Gold” in DRC; Fairmined, etc.
- ✓ ***Artisanal and small-scale mining Frequently Asked Questions*** to promote responsible investment in ASM sector
- ✓ **Cooperation and technical assistance with the ICGLR and Colombia** on ASM formalisation regulation best practices including **Gold baseline assessments (Colombia and DRC) focusing on ASM supply chains**





## Supporting the implementation of the Minamata Convention

---

### 1. **Awareness-raising**

- Sensitization of governments in gold producing countries (ex: in the Great Lakes region of Africa)
- Introduction to the Convention and implementing tools to other stakeholders (private sector; CSOs) through outreach activities (including trainings and workshops)

### 2. **Cooperation with the Global Environment Fund** to identify and promote innovative formalisation projects on the ground, in particular in conflict-affected and high-risk areas (ex: in West Africa and Latin America)

### 3. **Increase visibility of responsible ASGM** with international buyers (gold refiners in particular) through our implementation programme





## OECD Secretariat contacts

---

[Tyler.Gillard@oecd.org](mailto:Tyler.Gillard@oecd.org)

[Hannah.Koep-Andrieu@oecd.org](mailto:Hannah.Koep-Andrieu@oecd.org)

[Louis.Marechal@oecd.org](mailto:Louis.Marechal@oecd.org)

[Rashad.Abelson@oecd.org](mailto:Rashad.Abelson@oecd.org)

[Luca.Maiotti@oecd.org](mailto:Luca.Maiotti@oecd.org)

<http://mneguidelines.oecd.org/>

<http://www.oecd.org/corporate/mne/mining.htm>

